

JOHN W.H. BASSETT THEATRE



A Hidden Gem in Toronto

Whether the event you are planning is of a grand or intimate nature, the John W. H. Bassett Theatre offers a warm, yet striking setting that is sure to make a lasting impression on your guests. Named after the Honorable John W. H. Bassett, a prominent Canadian figure whose philanthropic efforts included the arts, our state-of-the-art theatre is centrally located in the heart of downtown Toronto, within the North Building of the Metro Toronto Convention Centre.

Sought out and utilized for a vast array of events, our versatile theatre is a blank slate that can be customized to create your next successful seminar, speaker series, cultural show, film screening, or any unique event that our team can help you execute. The John Bassett Theatre is the ideal space for corporate meetings, and continues to be selected by leading corporations as a top destination for keynote speakers, product launches, and annual meetings.

As with all functions hosted at the Metro Toronto Convention Centre, an event booked within our theatre will be coordinated by one of our dedicated in-house Event Managers. No detail is too small; their role is to work alongside you, ensuring your event is executed flawlessly, beautifully, and with ease.



MICHELE ROMANOW

Getting To Success: Embracing Change,
Encouraging Disruption, and
Incentivizing Innovation



@micheleromanow

SPONSORED BY



#iwsHOW

incentive.com

#iwsHOW

incentive.com

EXIT

EXIT

EXIT

EXIT

EXIT

EXIT



Plan a Successful Theatre Event

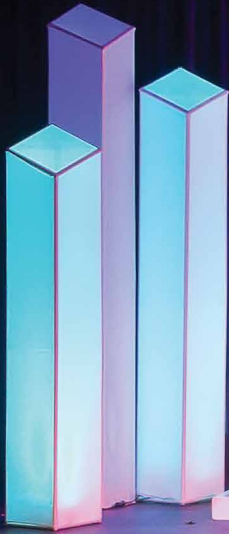
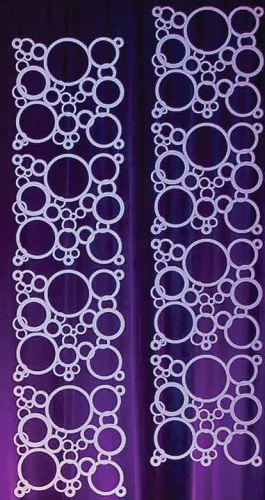
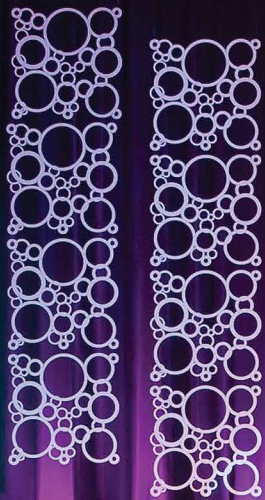
The John Bassett Theatre is a theatrical facility featuring a large professional stage area with flexible lighting and sound options. Designed to accommodate even the most elaborate stage productions, our theatre offers excellent acoustics and unobstructed sightlines from every plush seat in the house.

We can provide you and your team with everything you need for an outstanding performance, including:

- An experienced Theatre Coordinator and crew to assist you with technical and labour requirements
- State-of-the-art lighting, sound and acoustic technology
- A spacious lobby area
- A full orchestra pit
- Adjacent rooms which are ideal for elegant pre and post performance dinners or receptions

Other facilities designed to make your event a success include full back-of-house amenities, such as a green room, a warm-up room and seven change rooms. Of course, the theatre is fully wheelchair accessible too.







In a Convenient & Accessible Location

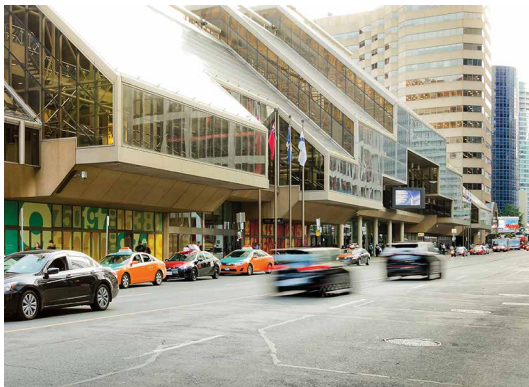
Like the Metro Toronto Convention Centre itself, the John Bassett Theatre is conveniently located in the heart of downtown Toronto, easily accessible by local transit, major roads and expressways. Our facility has its own dedicated theatre entrance, and we offer 1,700 indoor parking spaces.

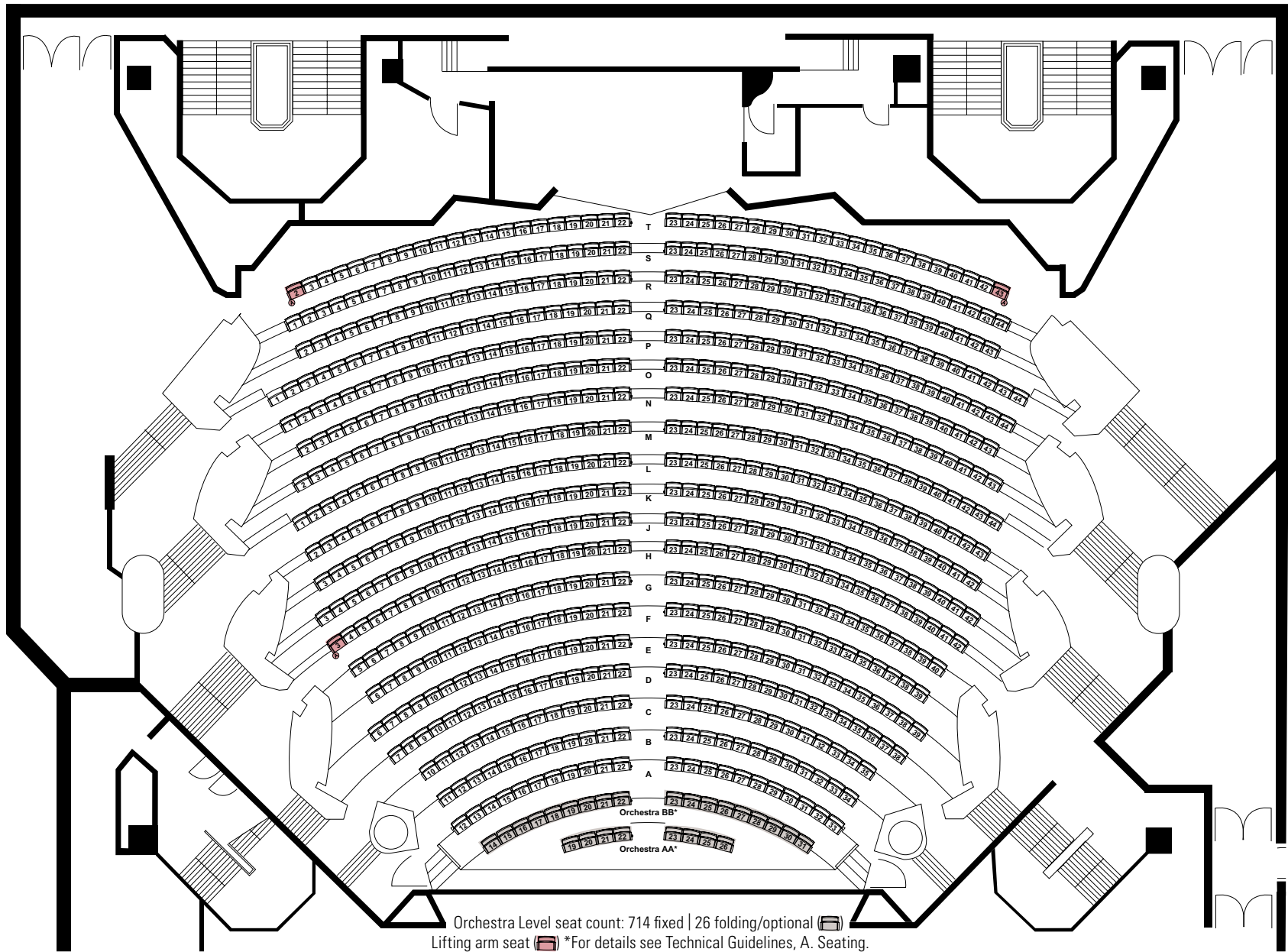
Our theatre is at the very centre of Toronto's vibrant entertainment district, and you'll find a wide variety of major attractions just outside our door. The city's finest hotels, restaurants and shops are within walking distance – just steps away for you and your guests to enjoy after the show!

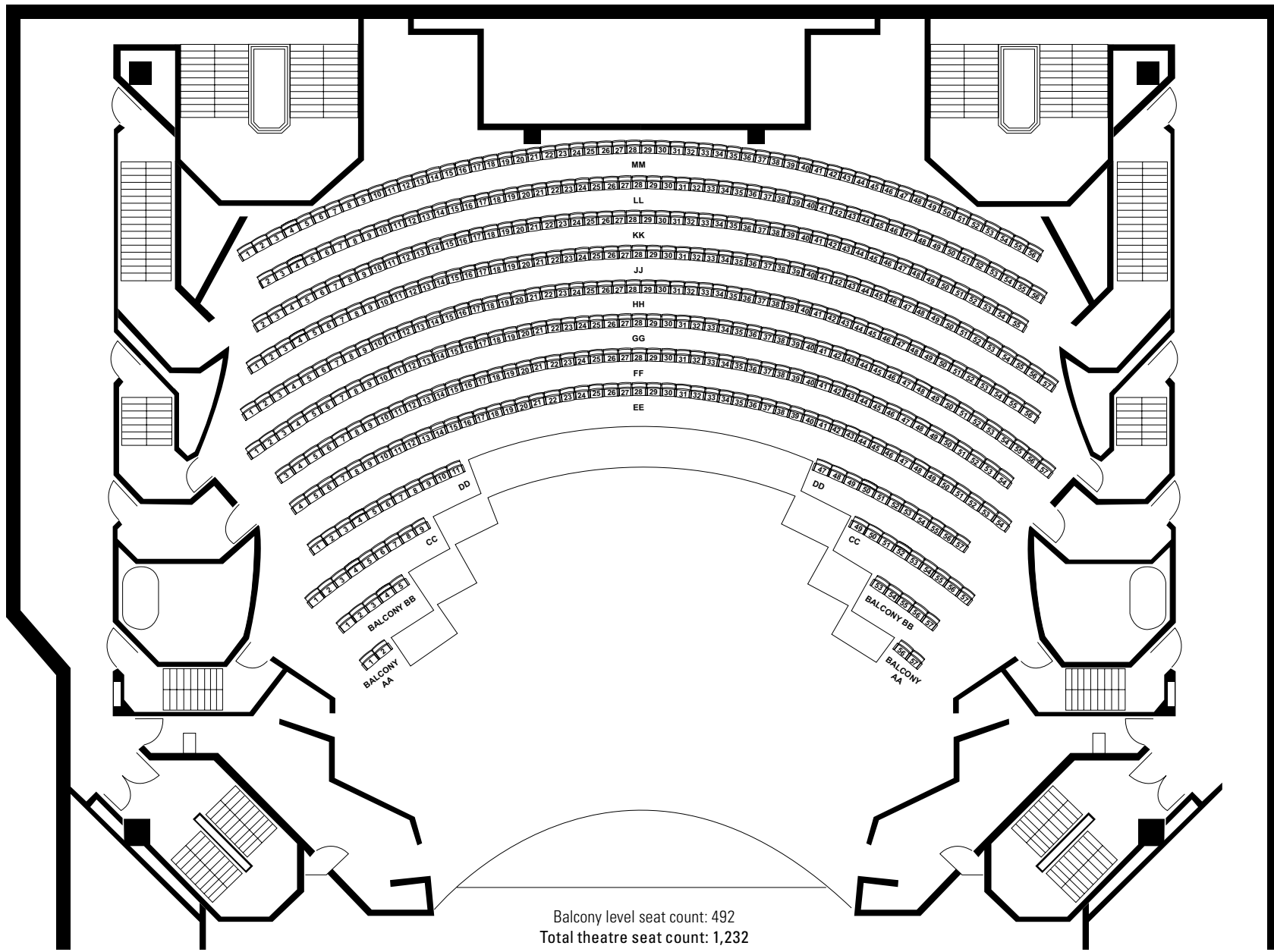


Multi-Purpose Venue of Choice

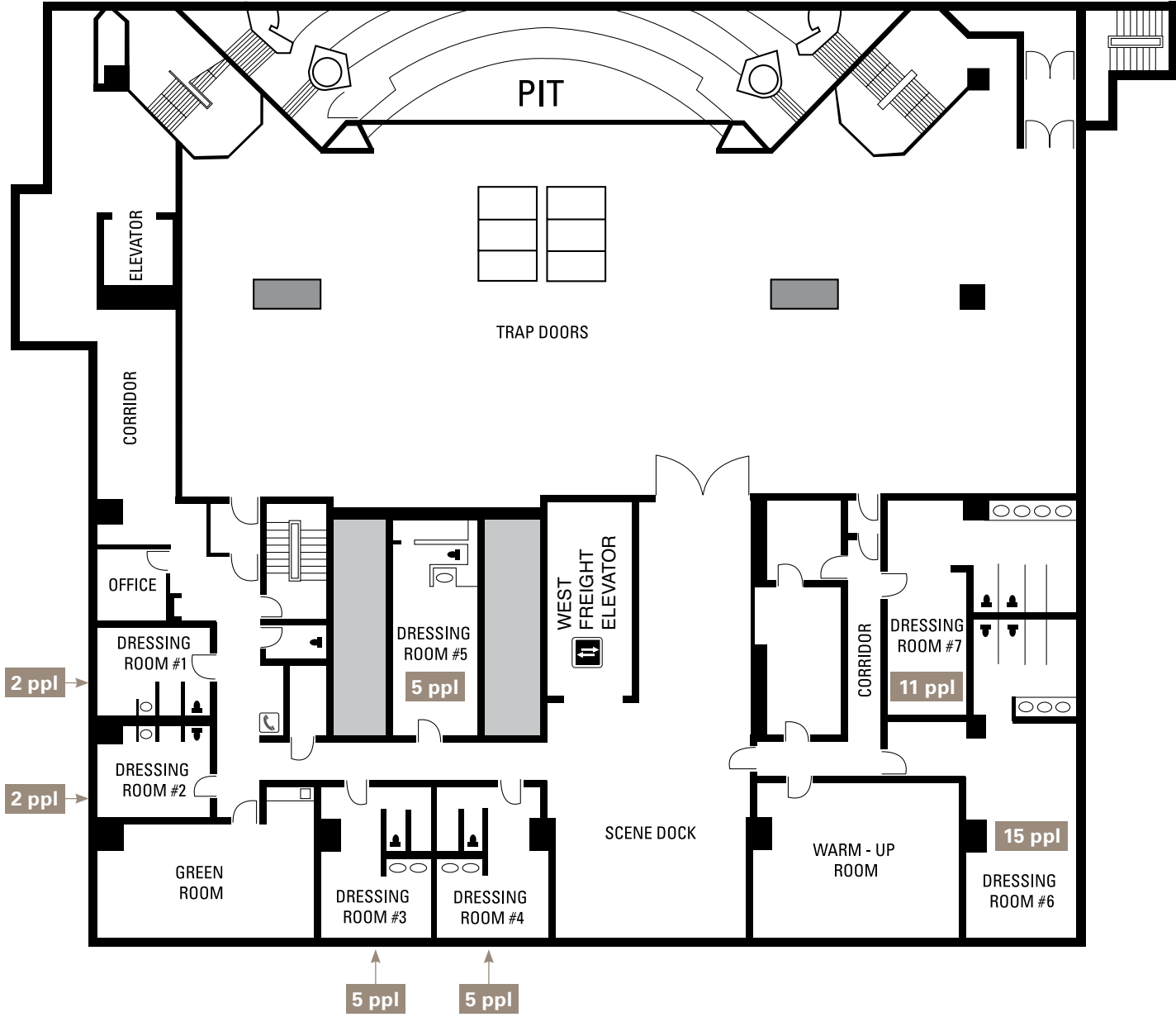
Our theatre is a multi-purpose, flexible facility. We offer comfortable seating for a variety of audience sizes – from small, intimate groups of 300 up to groups as large as 1,232 people. This versatility makes ours the venue of choice for a wide variety of events annually – concerts, theatrical productions, TV specials, corporate meetings, presentations, product launches and nationally televised award shows all prefer the John Bassett Theatre.

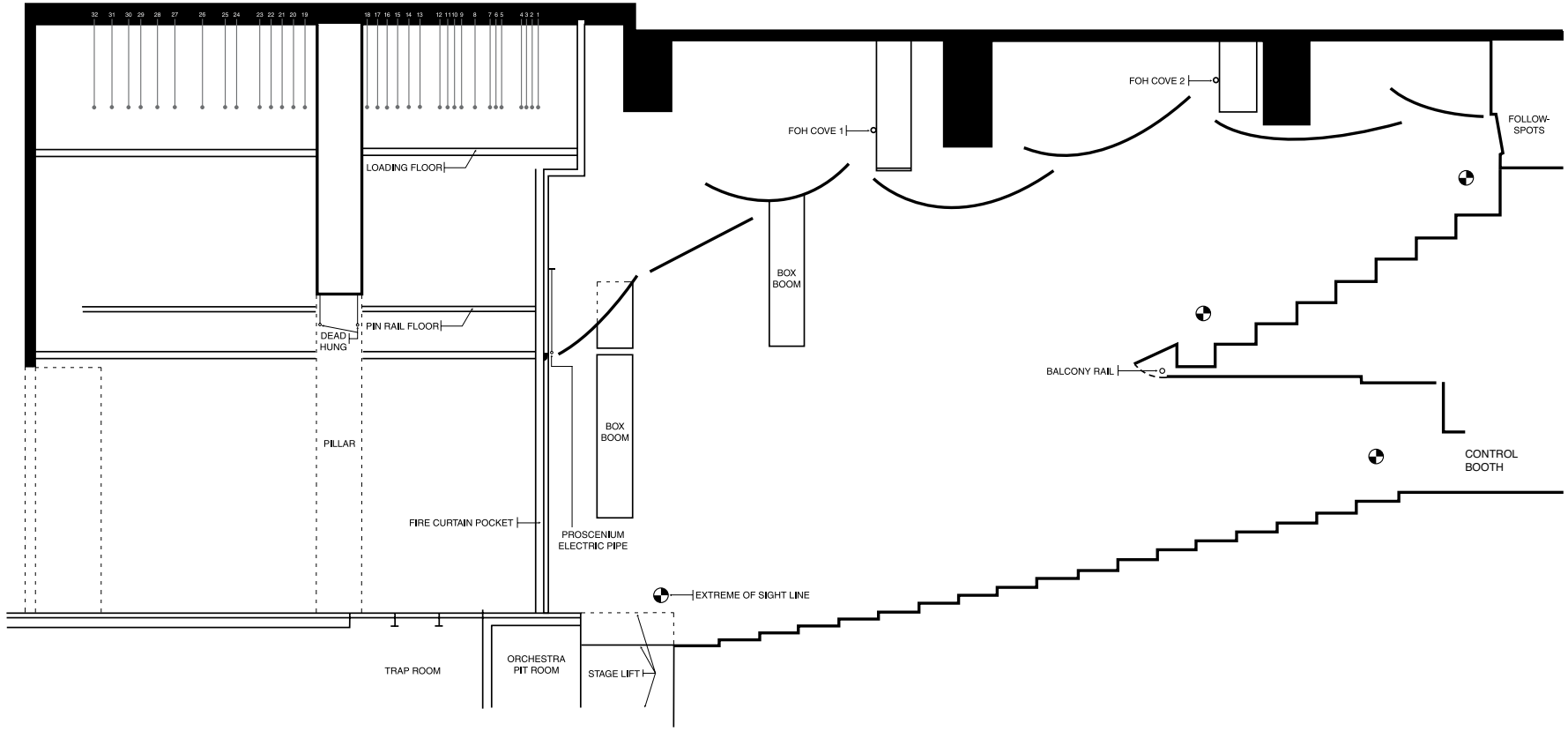


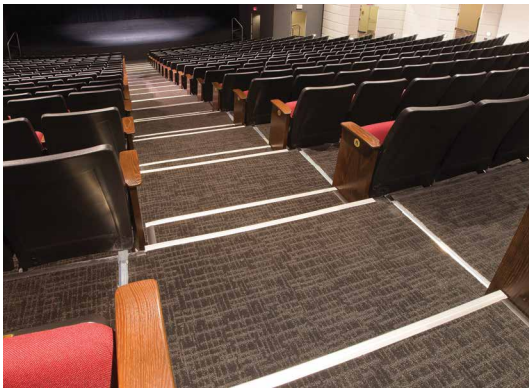




Balcony level seat count: 492
 Total theatre seat count: 1,232







A. SEATING

1,232 seats individually numbered: 714 Orchestra Level, 26 folding / optional (Orchestra AA & BB), 492 Balcony Level.

*Special notes

Wheelchair seating is available on the Orchestra Level behind row T, with space on either side to accommodate up to two wheelchairs. Row T seat 2, Row T seat 43 and Row H seat 3 have an outer armrest that lifts up to allow wheelchair attendees to transfer from their wheelchair into the seat.

Rows Orchestra AA and Orchestra BB are not available when the orchestra pit is in use.

B. STAGE DIMENSIONS

Proscenium Opening

Width: Max 45'10"

Height: Max 22'

Depth back wall to front of stage: 48'
(Downstage apron to upper stage)

C. STAGE FLOOR

Hard wood sprung floor painted black
(No drilling or screwing is permitted)

Stage trap coverings: 6 @ 3'11" x 8'

Trap depth: 9'

(No elevating device or stairs in traps,
must replace covers when using)

D. ORCHESTRA PIT

The orchestra pit is a hydraulic riser downstage of the stage. It can live between level with the stage to level with auditorium floor, or 5'10" below the auditorium floor.

Pit width: 16'

Pit lift width: 8'

Pit length: 45' approximately

Pit lift length: 40'

Max Pit lift load limits: 50 lbs. / sq. ft.

Depth below stage: 9'

Depth below auditorium: 5'10"

E. THEATRE RIGGING INFORMATION

Total line sets:

- 32 with counterweights
- Load capacity: 1,300 lbs. evenly distributed
- Operation manual counterweight
- Length of pipe – 58'
(with 3' extensions each end)
Maximum flying height: 44'

Please inquire with the John Bassett Theatre in-house rigging supplier for other rigging opportunities in the theatre.

F. SCREEN

No permanent screen – Screens can be arranged from our official audio video supplier at an additional charge.

G. BACK STAGE ROOMS

Stage Level

- Seven permanent dressing rooms with built-in washrooms, showers, make-up mirrors and coat racks (two 2 persons, three 5 persons, one 11 persons, and one 15 persons)
- One warm-up room with mirrored wall and dance bar
- One green room
- One orchestra room under stage
- One trap storage area
- Stage sound feed and general paging to backstage area

H. STAGE DRAPES

Main Curtain:

1 – 64'W × 22'6"H black velour pleated

Legs: 3 pairs – 12'W × 22'H black velour

Borders: 2 – 60' W × 12' H black velour

Border:

1 – 60' W × 12' H black velour pleated

Travellers:

2 – 64'W × 22'H black velour pleated

White Cyclorama: 1 – 50'W × 22'H

Upstage black drape:

1 – 64'W × 22'6"H black velour pleated

Note: Please refer to drawing for house hang

I. SOUND REINFORCEMENT SYSTEM

Main Speakers:

2 – Meyer UPQ-1P flown per side in proscenium, left/right

Sub-Woofer Speakers:

2 – Meyer 900-LFC flown center in proscenium

Stage Lip Fill Speakers:

4 – Meyer UP-4XP-EN3

Under Balcony Speakers:

6 – Meyer UPM-2XP

Speaker system processed using Meyer Callisto 616 and Meyer RMsServer

Audio Console:

Soundcraft Si Exp 32 – located at back of house sound mix position

QSC Touch Mix 8 – located on stage right used for smaller events

Stage Snake:

Soundcraft Mini Stagebox (32 inputs, 12 returns)

Mix Position Monitor: 1 – Meyer UP-4X4

Onstage Monitors: 2 – Meyer UPJ-1P

Microphone Inventory:

4 – Shure SM-58

4 – Shure SM-57

2 – Shure MX412 Podium Microphones

1 – Shure ULX-D quad wireless kit (4 handheld wireless microphones, 4 lavalier microphones, only a combination of 4 handheld and lavalier microphones can be used at a time)

4 – Radial Pro DI Boxes

Microphone Stands:

6 – Floor Mic Stands

4 – Boom Arms

2 – Low Mic Stands with boom arm

2 – Table Mic Stand

Additional audio reinforcement equipment can be arranged from our official audio video supplier at an additional charge.

John Bassett Theatre Sound System is supervised by in-house audio video supplier.

J. PROJECTION

The official audio video supplier has state-of-the-art projection equipment available to rent.

In-house projection capabilities include all formats of data and video/video mapping.

K. SIMULTANEOUS INTERPRETATION / IMPAIRED HEARING AID SYSTEM

Simultaneous interpretation and impaired hearing systems can be set up. Please contact the in-house official audio video supplier for further information.

L. INTERCOM SYSTEM

A single channel Clear Com communication system is included in the rental package.

Multiple patch points around the theatre including front of house mix position, stage right, stage left, and follow spot booth.

8 – Clear Com headset and belt packs

M. POWER

Included with the rental of the theatre:

- 2 – 400amp 3 phase 208v Disconnect, Cam Lok connectors, ground/neutral reverse, located down stage right (House lighting rig currently using 100amp of one 400amp electrical service with a Cam Lok pass thru)
- 1 – 100amp 3 phase 208v Disconnect, Cam Lok connectors, ground/neutral reverse, located up stage left
- 20 – 15amp electrical receptacles located around the stage

Additional power required throughout the venue including the lobby area and projection booth can be provided by the in-house electrical supplier at an additional charge.

N. LIGHTING

Package 1 (Front Stage Wash):

- 12 – ETC 575W Source Four Ellipsoidal 12 – 19 degree barrels
- Console: Martin M1
- Basic working lights are provided back stage with control on stage left.
- Dimmable auditorium house lights included with control in the lighting booth and stage right.

Package 2 (includes contents of Package 1):

- 24 – ETC LED Colour Changing Ellipsoidal 6 – 50 Degree Barrels 12 – 36 Degree Barrels 6 – 19 Degree Barrels
- 15 – Chroma Q Studio Force V 12 white LED wash fixture Variable (3200K to 5600K)
- 15 – Martin Mac Aura LED Colour Changing moving light wash fixture
- 6 – Martin Mac Viper Profile High output moving light profile fixture
- 9 – Elation Colour Chorus 72 Colour changing LED cyclorama wash
- 6 – DMX lines ran from the lighting booth to stage right (4 currently being used by house lighting rig)

Note: Please refer to drawing for house hang (house hang is fixed and may not be moved).

Additional lighting equipment can be arranged from our official lighting supplier at an additional charge including follow spots and hazers.

John Bassett Theatre Lighting System supervised by the in-house lighting and rigging supplier.

O. LOADING FACILITIES

Access to the theatre backstage is through the West freight elevator. The loading dock will accommodate one 24 foot straight truck at a time for direct access to freight elevator. Loading dock is three floors above stage level. There is no dock lift available at this dock. Larger trucks to be off loaded will require alternate arrangements and must be approved by the Event Manager.

Freight elevator: 8’6”H x 8’6” W x 23’6” L
Maximum weight: 10,000 lbs.

P. MISCELLANEOUS

Related equipment (i.e. music stands, stools, piano, musical instruments, etc.) can be arranged through the in-house contractors.

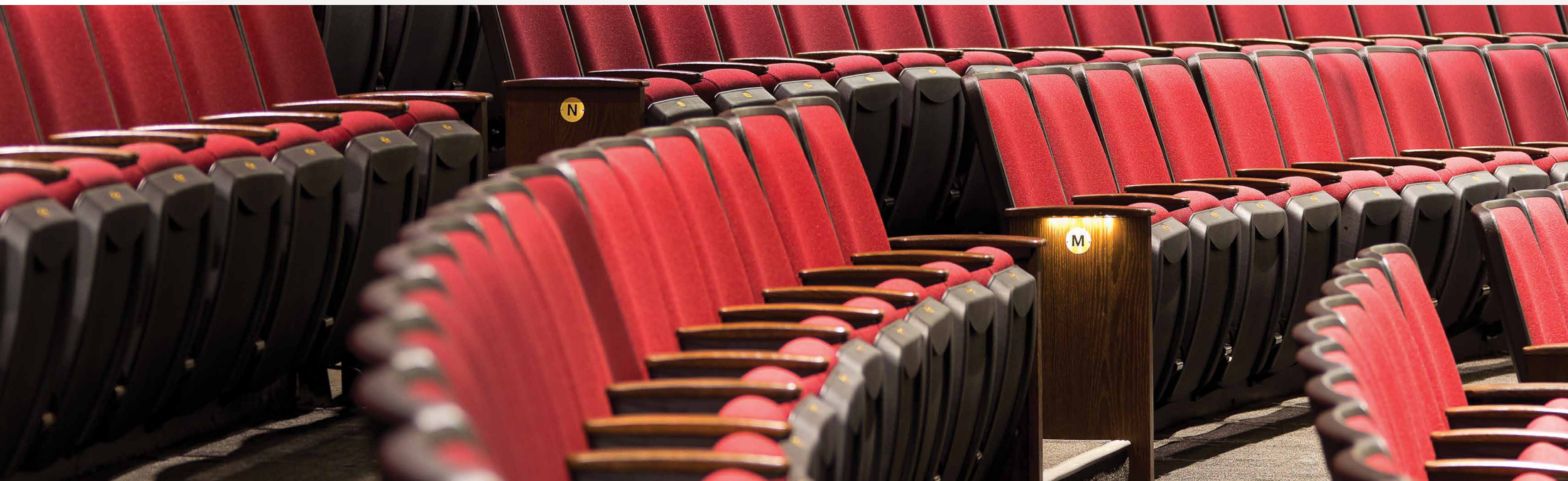
Q. PYRO AND SMOKE EFFECTS

All special effects/pyrotechnics will require proper permits and approvals including fog machines, hazers and confetti guns. Fire watch (MTCC Security) will be required and can be arranged with your event manager.

R. LABOUR

Stagehand labour and supervision is provided by our in-house supplier at an additional charge. Please contact supplier for pricing.





255 Front Street West, Toronto, Ontario, Canada M5V 2W6
T: (416) 585-8120 | theatre@mtccc.com
mtccc.com/theatre